



# Rosenbauer International AG

## Products Brief Overview

Ala'a Ahmed (Eng.)

Jan. 2014

[www.rosenbauer.com](http://www.rosenbauer.com)



# Company Profile



- Leading manufacturer of fire fighting vehicles in the fire protection and civil defense sector
  - Full-Liner - covering any needs of the fire services.
  - World's largest exporter of fire fighting vehicles.
  - Largest sales and service organization in the fire industry.
  - Production facilities on three continents (Europe, North America, Asia).
  - Production according to DIN and NFPA (US) standards.
- World's largest provider of specialty vehicles for airports and industry.
- Industry's leader in technology and innovation.
- EN and DIN standards are amongst the standards worldwide with validity for fire departments.
- Rosenbauer ensures compliance through the fulfillment of these guidelines and the maintenance of ISO 9001, ISO 14001 and OHSAS 18001 certifications.

**Mission statement:** The fire departments are our core customers!

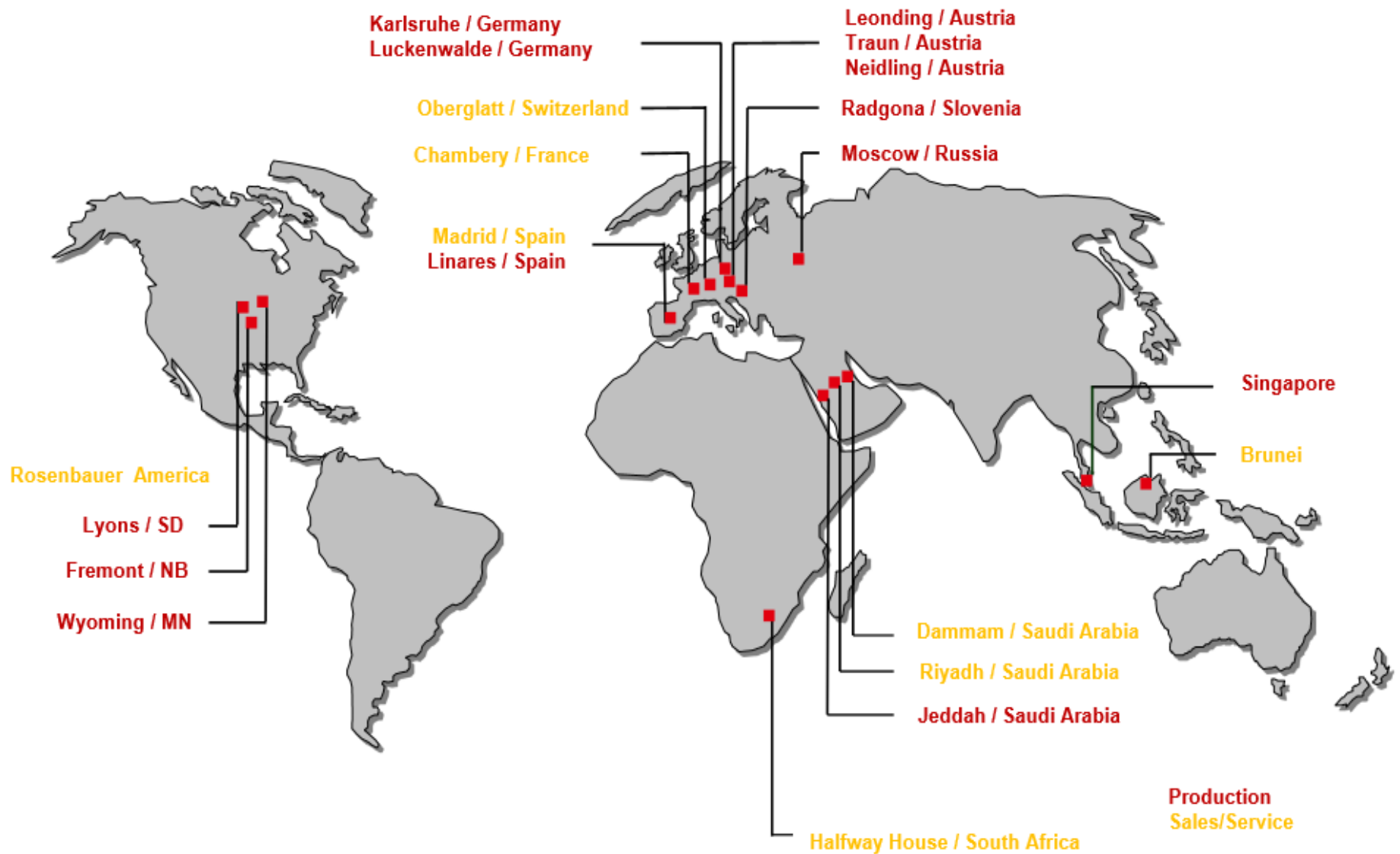


# History, Since 1866



<b>1866</b>	<b>Established by Johann Rosenbauer as a trading company in Linz, Austria</b>
<b>1906</b>	Began producing fire pumps and components
<b>1919</b>	Began producing fire fighting vehicles
<b>1926</b>	Began exporting to China
<b>1968</b>	Moved to new factory in Leonding (near Linz)
<b>1976</b>	Exports represented over 50% of total sales
<b>1976</b>	Participated in Rosenbauer AG, Switzerland
<b>1983</b>	Participated in Rosenbauer Española S.A., Spain
<b>1988</b>	Reorganized Konrad Rosenbauer K.G. -> Rosenbauer International GmbH
<b>1990</b>	Acquired M-U-T Feuerwehrtechnik Gesellschaft GmbH (production facility Neidling, Austria)
<b>1991</b>	Acquired SK Rosenbauer PTE Ltd., Singapore (former SK Fire PTE Ltd.)
<b>1992</b>	Converted into Rosenbauer International GmbH into AG
<b>1994</b>	Shares of Rosenbauer International AG are publicly traded
<b>1995</b>	Participated in General Safety Equipment LLC., Minnesota, USA
<b>1998</b>	Acquired the Metz Aerials Group in Germany
<b>1998</b>	Participated in Central States Fire Apparatus LLC., South Dakota, USA
<b>2000</b>	Participated in RK Aerials LLC., Nebraska, USA
<b>2003</b>	Participated in Rosenbauer Motors LLC., Minnesota, USA
<b>2006</b>	Foundation of Rosenbauer South Africa
<b>2009</b>	Russian production joint venture started
<b>2011</b>	Biggest-ever order in history - Rosenbauer to supply 245 m€ worth of vehicles to Saudi Arabia
<b>2012</b>	90% acquisition of Slovenian superstructure manufacturer Mettis
<b>2013</b>	Foundation of Rosenbauer Saudi Arabia Ltd.

# Locations (Production/Sales/Services) Facilities



# Product Ranges



**ARFF/Airport Vehicles**

**Stationary FF Systems**

**Aerials/Platform Vehicles**

**Firefighting Systems**

**Municipal Vehicles**

**Body Components**

**Industrial Vehicles**

**Vehicle Management**

**Special Vehicles**

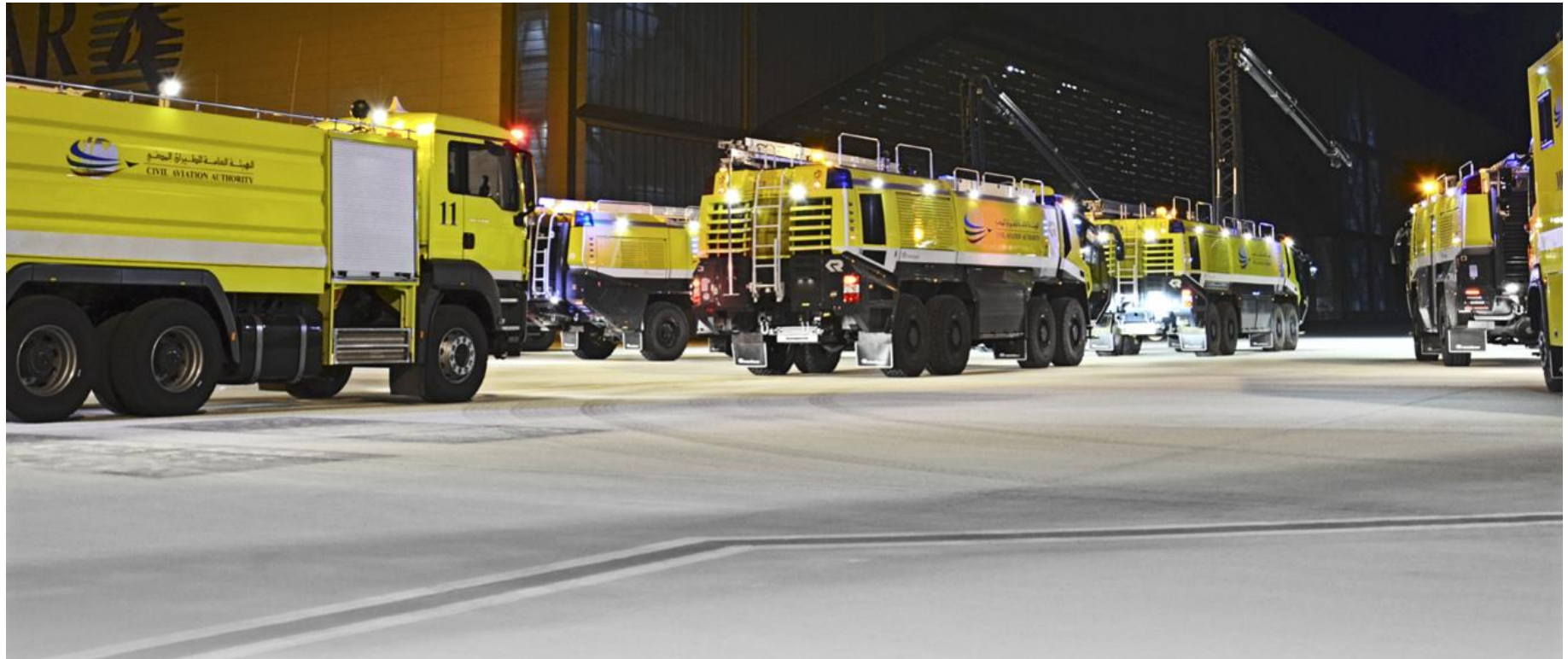
**Information management**

**Equipment**





# ARFF/Airport Vehicles



➤ PANTHER

➤ BUFFALO

➤ E8000/3000 Escape stair

➤ Rapid Intervention vehicle

➤ Mobile Command Post

# ARFF/Airport Vehicles

## ➤ PANTHERS Vehicles



The top class of the ARFF vehicles meet standards and airport requirements of all continents worldwide. The PANTHER has been synonymous with speed, safety, design and outstanding firefighting performance for over 20 years.

### Series:

(8x8) - (8x8 HRET) - (6x6) - (6x6 HRET) - (6x6 "S 2,5 new") - (4x4) - (4x4 Air)

# ARFF/Airport Vehicles

## ➤ BUFFALO Vehicles



The BUFFALO is an ARFF vehicle of the tried and tested CBS series, conceived for rapid and efficient operation on runways as well as off-road on difficult terrain.

The CBS series of the BUFFALO includes ARFF vehicles on 2 and 3-axle chassis with permanent all-wheel drive, single tires and tank contents of 2,500 to 11,000 liters.



# ARFF/Airport Vehicles

## ➤ E8000/E3000 Escape Stairs vehicle



The escape stair is a specially developed operational vehicle for rapid evacuation of aircraft passengers. At the same time, operational forces like firefighters, rescue and emergency personnel can gain access to the interior of the aircraft.

- E8000 Rescue height 3.3 – 8.5 m
- E3000 Rescue height 1.0 – 3.0 m

# ARFF/Airport Vehicles

## ➤ Rapid Intervention Vehicles



Rapid Intervention Vehicles (RIVs) are built on dual-axle vehicle chassis of American manufacturers with permanent all-wheel drive and dual tires. Tank contents are selectable with contents of up to 1,700 l. Additional systems, such as an optionally available dry powder units as well as CO2 systems, complete this series.



# ARFF/Airport Vehicles

## ➤ Mobile Command Post Vehicles (According to ICAO)



One command wagon (ELW/ELF) supports during the tactical coordination of units for fire fighting and during disaster operations. Aircraft accidents mostly occur at the end or start of the runways as well as on the taxiways. A mobile command center on location is necessary to perform rapid explorations and to ensure coordination with headquarters in the tower.

The operational commanders will find the right equipment in the interior of the vehicle to optimally cooperate with other units in emergency situations.

# Municipal Vehicles



➤ **AT- Advanced Technology**

➤ **CL - Compact Line**

➤ **ES – Euro System**

➤ **CBS – Customized Body System**



# Municipal Vehicles

## ➤ AT – Advanced Technology Vehicles



- Covers all types of municipal vehicle in the (10-20 t) range
- One superstructure width (2.5 m) can be combined with two differing heights
- Maximum maneuverability due to a minimum rear projection
- Individual and custom-made entirely in line with your requirements

# Municipal Vehicles

## ➤ CL – Compact Line Vehicles



The CL series includes small vehicles of up to 12 tons. The body concept of the Compact Line provides a lot of space for crew and equipment thanks to its dimensions and low weight – without having to sacrifice safety and performance. You have maximum flexibility in the design of your driver's cab.

- **Series:** (3.5 – 7 ton) & (8 – 12 ton)



# Municipal Vehicles

## ➤ ES – Euro System Vehicles



The highly durable bodies of the ES series are manufactured with self-supporting and torsion-resistant aluminum and ribbed construction. Sandwich sheets also reduce the weight, this results in maximum weight savings.

- **Series:** (9 – 18 ton)

# Municipal Vehicles

## ➤ CBS – Customized Body System Vehicles



The CBS series offers a high degree of flexibility and is specially tailored to the requirements in urban and rural areas.

The CBS municipal vehicles include tank extinguishing vehicles on 2, 3 and 4-axle chassis with tank contents of 4,000 to 18,000 liters.



# Aerials/Platforms Vehicles



➤ Aerial Ladders

**Metz**

➤ Hydraulic Platform

Rosenbauer Group

# Aerials/Platforms Vehicles

## ➤ Aerial Ladders Vehicles



**Series/Working Height :**

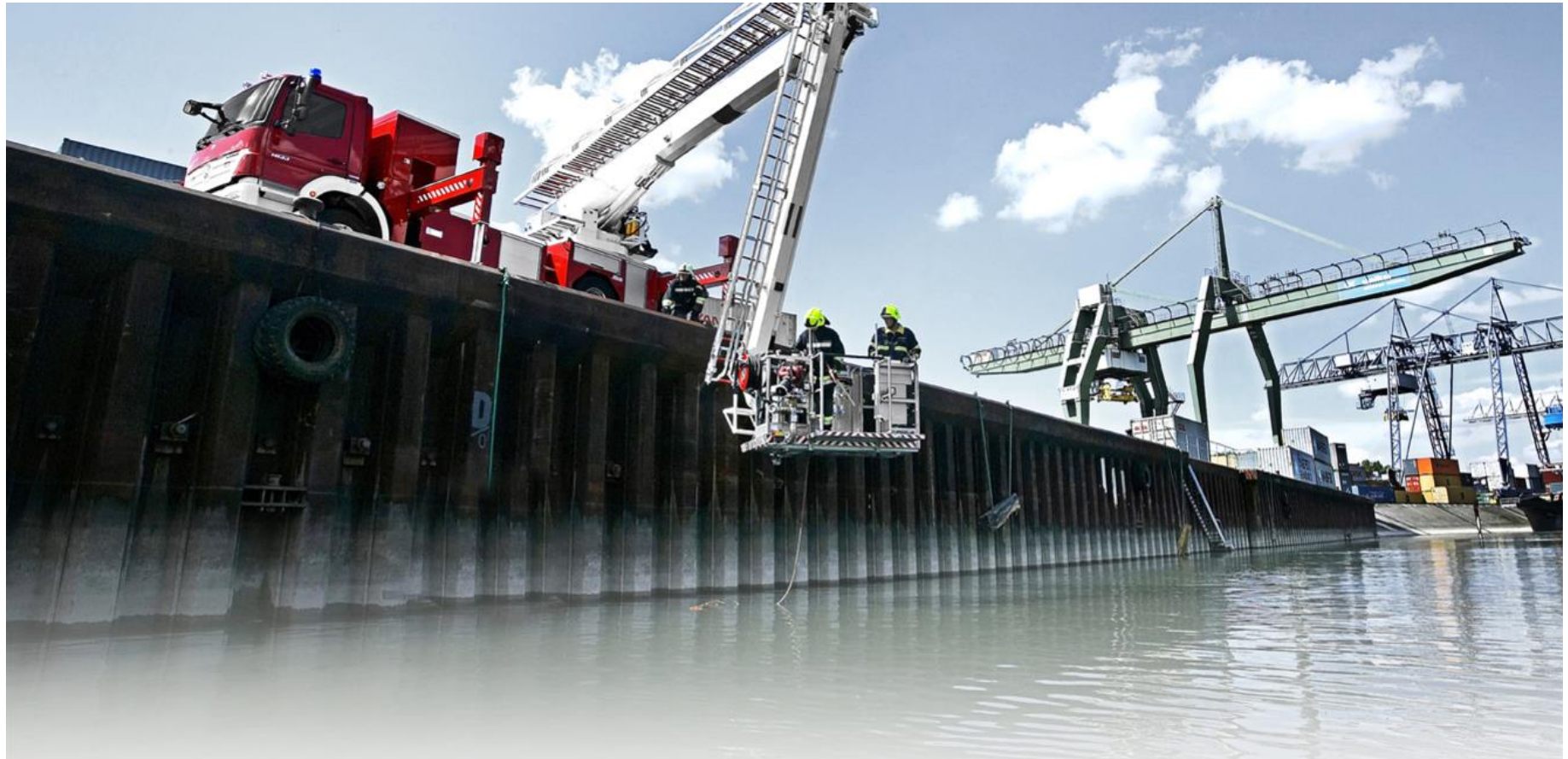
(L32/32m) – (L39/39 m) – (L41/41m) – (L56/56m) – (L62/62m) – (L90/90m)

**Max. Cage Payload:** Up to 650 Kg.



# Aerials/Platforms Vehicles

## ➤ Hydraulic Platform Vehicles



**Series/Working Height :**

(B32/32m) – (B36/36m) – (B42/42 m) – (B55/55m) – (B62/62m)

**Max. Cage Payload:** Up to 450 Kg.

# Industrial Vehicles



➤ **CBS – Customized Body System**

➤ **Dry Powder Fire Vehicles**



# Industrial Vehicles

## ➤ CBS – Customized body System



The design of the modular CBS body concept impresses with its flexibility and is particularly suitable for the most diverse requirements in the industrial area.

### **They are often equipped as follows:**

- Fixed built-in roof turret or STINGER HRET boom
- Enlarged foam tank
- Additional tank for the special extinguishing agent CO<sub>2</sub>
- Additional dry powder unit
- Rapid intervention hose reel and much more

# Industrial Vehicles

## ➤ Dry Powder Fire Vehicles



Dry powder fire trucks are designed to fight fires without the use of water or foam. They are used in situations where water would have a negative impact on fires or substances stored near a fire source.

This vehicle concept includes a dry powder unit and the corresponding technical firefighting equipment. These vehicles are primarily used by in-house fire departments of the metal and chemical industries.

**Series :** Dry powder vehicles on 2, 3 and 4-axle chassis with powder from (1,000 to 10,000 kg).



# Special Vehicles



- Forest firefighting vehicles
- Command vehicles
- Swap body vehicles, roll-off containers
- Rescue vehicles
- HAZMAT Vehicles
- Special vehicles

# Special Vehicles

## ➤ Forest Vehicles



Forest fire trucks are firefighting vehicles designed for fires in forests and bush landscapes as well as terrain that is difficult to access . Components like extinguishing agent tank, pump system as well as equipment compartments with corresponding equipment are built on a single-tire, very all-terrain, all-wheel chassis body.

**Series : Water/foam tank capacities** (TLF 3300/200) & (TLF 3200/150)



# Special Vehicles

## ➤ Command Vehicles



A command vehicle supports deployment crews in the management and coordination of tactical units for fighting fire and disaster operations. The command vehicle is an indispensable instrument for authorities and organizations for controlling and mastering difficult operational situations in a manageable and organized fashion.

### Series :

- Command Vehicle for Small Fire and Damage Risks.
- Command Vehicle for Medium Risk of Fire & Damage.
- Command Vehicle for High Risk of Fire & Damage

# Special Vehicles

➤ Swap Body Vehicles, Roll-off Containers Vehicles



Certain operational scenarios require various sorts of vehicle equipment. Roll-off containers from Rosenbauer are the most efficient solution for the highest flexibility for the transportation and storage of equipment that is only needed in certain situations.

You don't need specially equipped operational vehicles any more and are well prepared for special operations.



# Special Vehicles

## ➤ Rescue Vehicles



Rosenbauer manufactures rescue vehicles according to state-of-the-art methods. The corrosion-resistant aluminum frame structure with aluminum flashing is a proven adhesive design that is extremely stable and durable.

Depending on individual requirements, a multitude of additional equipment may be selected,

**For example:**

- Hydraulic cable winch
- Rescue crane
- Built-in generator



# Special Vehicles

## ➤ HAZMAT Vehicles



### **Vehicle concepts:**

Hazardous material (HAZMAT) and decontamination.

HAZMAT and decontamination vehicles from Rosenbauer are fully equipped for hazmat operations and represent the complete and perfect solution for this sector. Customized and customer-specific solutions characterize this vehicle concept.

**Series:** (HAZMAT CL) - (HAZMAT AT) – (HAZMAT SOF) – (HAZMAT GWG SOF) – (DECON SOF)

# Special Vehicles

## ➤ Special Vehicles



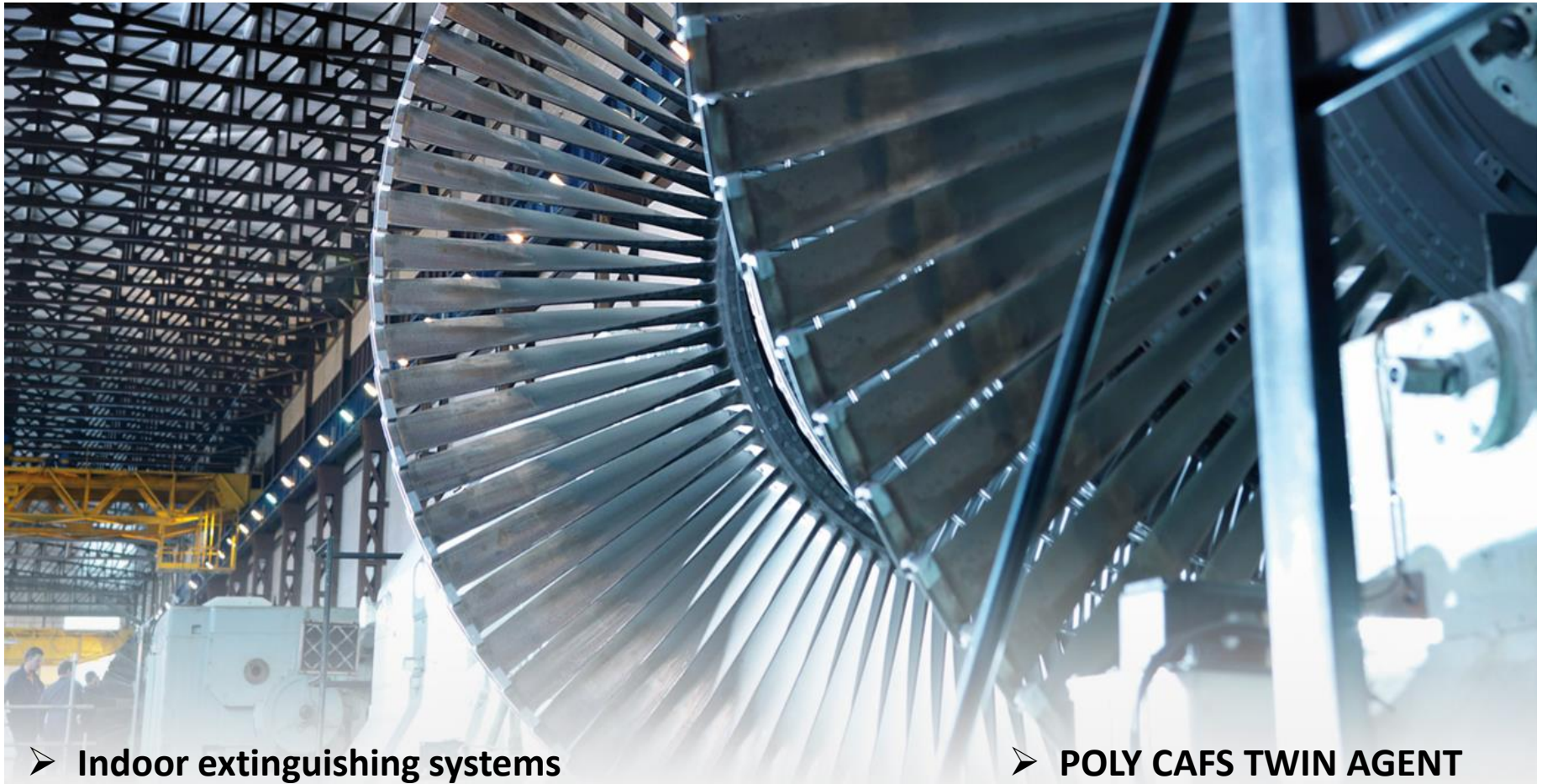
The vehicle concepts range from smallest firefighting vehicles on motorbikes, quads, and tunnel extinguishing vehicles right through to the heaviest tow trucks on four axle chassis.

### Series:

- **Smallest FF Rescue Vehicles:** (POLY QUAD SI100 CAFS) – (UHPS ATV 6x6)
- **Heavy Rescue vehicles:** (Tugging Winch Vehicle)
- **Road-Rail Vehicles**



# Stationary Firefighting Systems



- Indoor extinguishing systems
- Turret extinguishing systems
- Tunnel extinguishing systems

- POLY CAFS TWIN AGENT
- POLY extinguishing systems
- Applications



# Stationary Firefighting Systems

## ➤ Indoor Extinguishing System



Stationary fire extinguishing systems protect people, buildings, machinery and flammable materials. The systems are based on the innovative CAF (compressed air foam) system. Extinguishing agent is distributed via full cone spray nozzles.

The extinguishing system can be designed as a self-sufficient system (POLY) and then functions completely without external energy. The firefighting system can be connected to a fire detection device and activates automatically in an emergency.

# Stationary Firefighting Systems

## ➤ Turret Extinguishing System



Rosenbauer's turret extinguishing systems are used where sprinkler and spray water systems offer insufficient protection or could lead to high consequential damage.

### **Building Fire Protection**

- Aircraft hangars
- Large storage tanks
- Helicopter landing sites
- Waste bunkers
- Warehouse halls



# Stationary Firefighting Systems

## ➤ Tunnel Extinguishing System



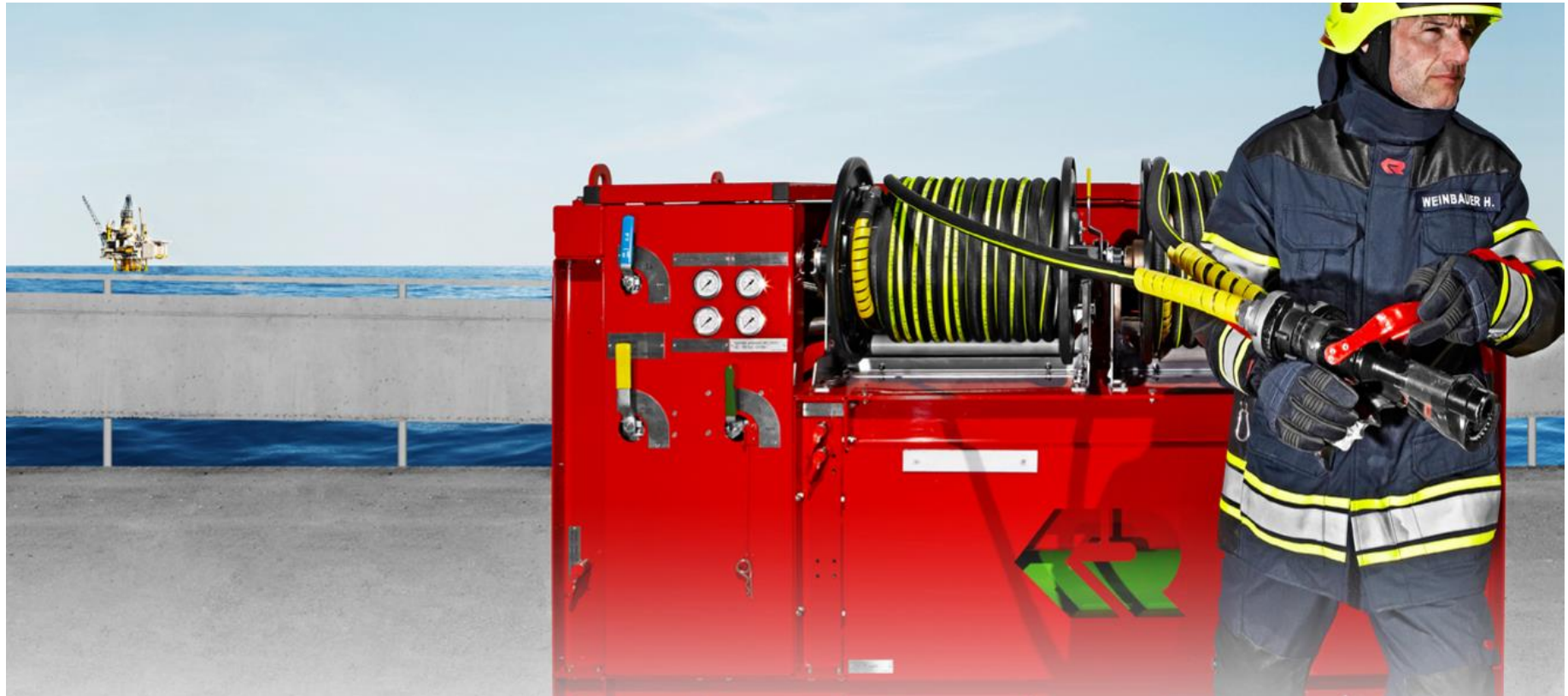
Tunnel extinguishing systems were developed for the protection of tunnels but they can also be used in other areas, such as:

- Underground traffic routes
- Storage areas
- Factory halls
- Helipads
- Machine halls
- Power stations



# Stationary Firefighting Systems

## ➤ POLY CAFS TWIN AGENT



The POLY CAFS **TWIN AGENT** is a semi-stationary firefighting system for the protection of helicopter landing sites and special industrial applications. It is especially suited for offshore areas because of its resistant materials and robust design. The system combines powder and CAFS (compressed air foam) and thus offers high extinguishing efficiency.

**TWIN AGENT** system can successfully handle plastic, rubber, liquid and gas fires. It is used in industrial plants or oil and gas transmission stations. The system is especially suited for offshore applications - to protect helidecks, oil platforms, oil rigs, etc.

# Stationary Firefighting Systems

## ➤ POLY Extinguishing Systems



**POLY extinguishing systems** are energy self-sufficient container extinguishing solutions. The container is filled with premix (water-foaming agent mixture). The premix solution is actively expanded into foam and with the addition of compressed air transformed into highly efficient compressed air foam (CAFS).

POLY extinguishing systems require no wiring, no redundant power supply and no emergency power equipment. Low repair and maintenance costs offer an additional advantage.

**Series:**

**(POLY SL100 - SL3000)**

**(POLY TROLLEY SL35/SL50)**

**(POLY PORTEX (Back-Pack) SL10)**



# Stationary Firefighting Systems

## ➤ Applications



Tunnel		
Aircraft hangars	Offshore	
	Paint shops	
	Power plant	
	Wastewater treatment plant	
Engine test bench	Port loading station	
Waste recycling	Waste sorting plants	
RDF power station	Helicopter landing sites	
	Beverage crates storage	

# Stationary Firefighting Systems

## ➤ Applications (Aircraft Hangars)



### Lufthansa Reference object

The new Lufthansa A380 fleet is stationed and maintained at the base airport of Frankfurt. A new hangar had to be built for this purpose, which was designed for the requirements of the A380. The first building section is 180 m wide, 45 m tall and 140 m deep and equipped with a Rosenbauer turret extinguishing system.

All turrets can be operated via a control center or directly.



# Stationary Firefighting Systems

## ➤ Applications (Engine Test Bench)



### Safety check of the fighter jet after maintenance

- Throttling up the engines to full power
- Temperatures of around 800°C in the engines
- High fire risk with dangers for pilot and Aircraft
- Combustible residual liquids are possible in the lines

The system starts extinguishing in less than 10 seconds after activation.

An energy self-sufficient CAFS turret extinguishing system was installed to protect the fighter jet.

One turret on each side of the Eurofighter ensures safety for the pilot and A/C during the engine tests.

# Stationary Firefighting Systems

➤ Applications (Offshore & Helicopter landing sites)



## Robust solutions for offshore applications

The POLY CAFS **TWIN AGENT** is a semi-stationary firefighting system for the protection of helicopter landing sites and special industrial applications.

It is especially suited for offshore areas because of its resistant materials and robust design. The system combines powder and CAFS (compressed air foam) and thus offers high extinguishing efficiency.



# Stationary Firefighting Systems

## ➤ Applications (Power plant)



### ➤ Perfect protection for complex requirements

In complex environments like power plants, having a comprehensive fire protection plan and reliable extinguishing systems is essential to ensure the safety of workers and for the continuous supply of electrical power.

Water turrets are ideal for protecting large storage areas and bunkers.

Their long throw ranges safely reach the burning objects, even over long distances.

The CAFS extinguishing system is designed to provide highly effective protection for machines and conveyor belts.

Its spray nozzles distribute compressed foam across the seat of the fire, denying it the oxygen it needs to cont. burning.

# Firefighting Systems



- Portable pumps
- Truck-mounted pumps
- Ultra-high pressure system
- Foam proportioning systems
- POLY CAFS fire fighting systems

- Turrets ➤
- CAFS systems ➤
- STINGER HRET ➤
- Motor/pump units ➤
- Nozzles and Monitors ➤



# Firefighting Systems

## ➤ Portable Pumps

Portable pumps from Rosenbauer impress even under the toughest of operating conditions. All pumps (apart from the OTTER diesel) are driven by an air-cooled engine and have a single-stage pump unit. The portable pumps can be adapted to any customer requirement thanks to extensive options.

A select product range offers the optimum solution for any requirement.

- High performance
- Low weight
- Air cooling
- Can be refueled in operation
- Attractive design



BEAVER



OTTER



OTTER DIESEL



FOX Pump

- 1,600 l/min at 10 bar
- Weight 167 kg
- BMW engine
- Air cooling



RS3H Waste water pump

# Firefighting Systems

## ➤ Truck Mounted - Pumps



### ➤ Normal pressure pumps (N25, N35, N45, N55)

- The normal pressure housing is designed as a spiral housing with integrated diffuser for the highest efficiency
- Low speed, therefore no gearbox is usually needed - noise reduction
- Sealing via maintenance-free mechanical sealing
- Single stage normal pressure pump

#### N25

- Output of up to 2,500 l/min at 10 bar

#### N35

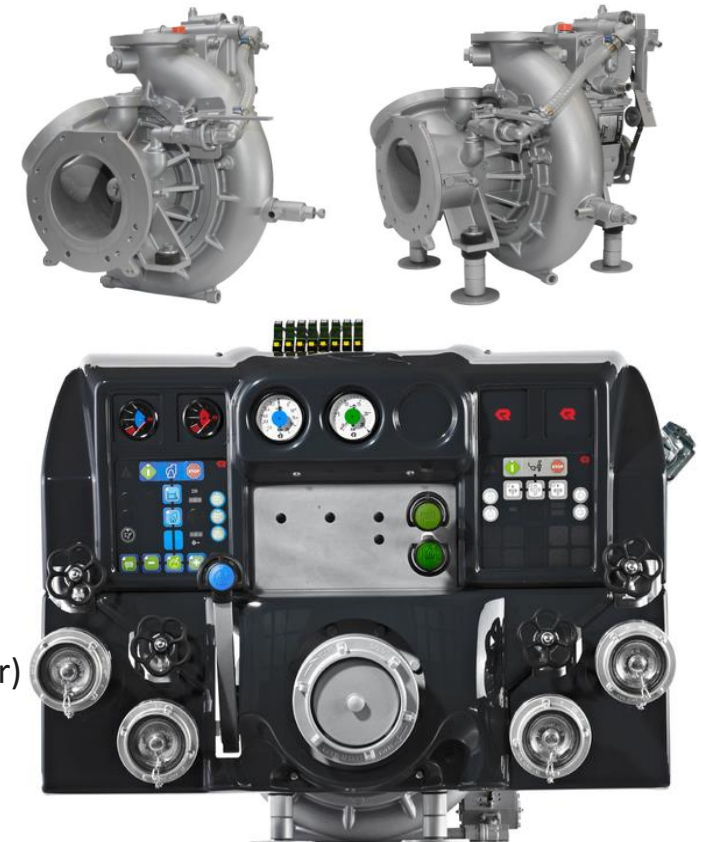
- Output of up to 3,500 l/min at 10 bar

#### N45

- Output of up to 4,500 l/min at 10 bar

#### N55

- Output of up to 5,500 l/min at 10 bar
- Outputs in accordance with NFPA1901 150-1500 (5,680 l/min at 10 bar)



- UL classified in accordance with NFPA1901 150-500, 150-750, 150-1250, 150-1500
- Certified according to EN1028 FPN 10-1500, FPN 10-2000, FPN 10-3000, FPN 10-4000, FPN 10-6000



# Firefighting Systems

## ➤ Truck Mounted - Pumps



### ➤ Combined normal/high pressure pumps (NH25, NH35, NH45, NH55)

- Design of the normal pressure housing as spiral housing with integrated diffuser for highest efficiency
- Single-stage normal pressure pump and four-stage high-pressure pump on a common shaft
- Low speed, so usually no gear-box needed - noise reduction
- Sealing via maintenance-free mechanical sealing

#### NH25

- Normal pressure output of up to 2,500 l/min at 10 bar
- High pressure output of up to 400 l/min at 40 bar

#### NH35

- Normal pressure output of up to 3,500 l/min at 10 bar
- High pressure output of up to 400 l/min at 40 bar

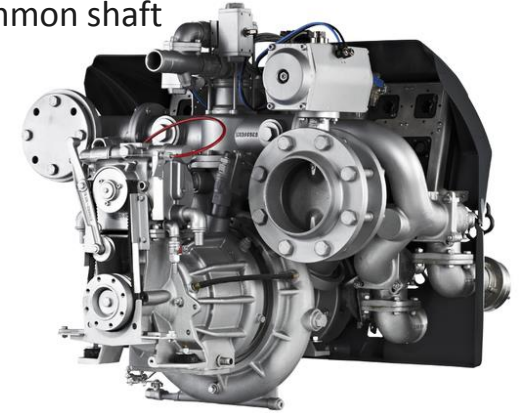
#### NH45

- Normal pressure output of up to 4,500 l/min at 10 bar
- High pressure output of up to 400 l/min at 40 bar

#### NH55

- Normal pressure output of up to 5,500 l/min at 10 bar
- High pressure output of up to 400 l/min at 40 bar
- Outputs in accordance with NFPA1901 150-1500 (5,700 l/min at 10 bar)

- UL classified in accordance with NFPA1901 150-500, 150-750, 150-1250, 150-1500
- Certified according to EN1028 FPN 10-1500, FPN 10-2000, FPN 10-3000, FPN 10-4000, FPN 10-6000



# Firefighting Systems

## ➤ Truck Mounted - Pumps



### ➤ High pressure pump (H5)

- Output up to 500 l/min at 40 bar
- 4-stage centrifugal pump as high pressure pump
- Sealing via maintenance-free mechanical sealing
- Design of the high pressure pump as centrifugal pump
- Smaller pressure surges through flat pump characteristics



### ➤ Normal pressure pump (R600)

- 2-stage normal pressure pump
- Output of up to 7,000 l/min at 10 bar
- Sealing via maintenance-free mechanical sealing



### ➤ R600 PISTON PRIMING PUMP

Double piston pump is a highly effective and extremely robust priming pump for firemen.

### ➤ FOAMATIC AUTOMATIC AROUND-THE-PUMP FOAM PROPORTIONING SYSTEM

For the R600, the FOAMATIC A & E automatic around-the-pump foam proportioning systems are available

- UL classified in accordance with NFPA1901 150-500, 150-750, 150-1250, 150-1500
- Certified according to EN1028 FPN 10-1500, FPN 10-2000, FPN 10-3000, FPN 10-4000, FPN 10-6000





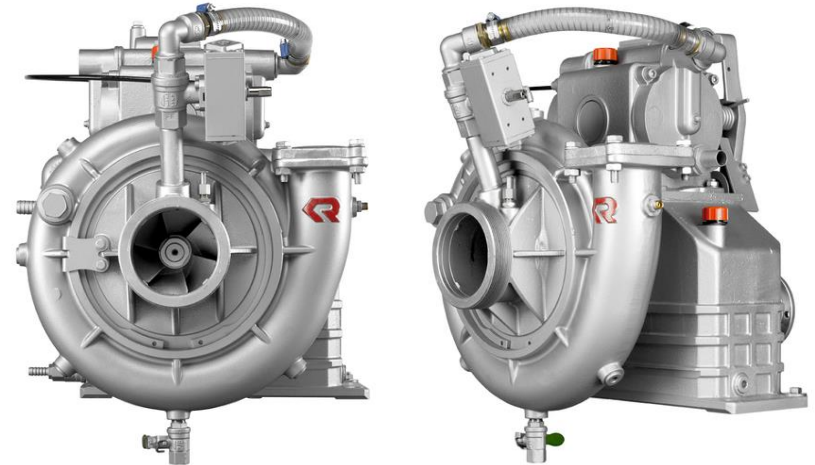
# Firefighting Systems

## ➤ Truck Mounted - Pumps



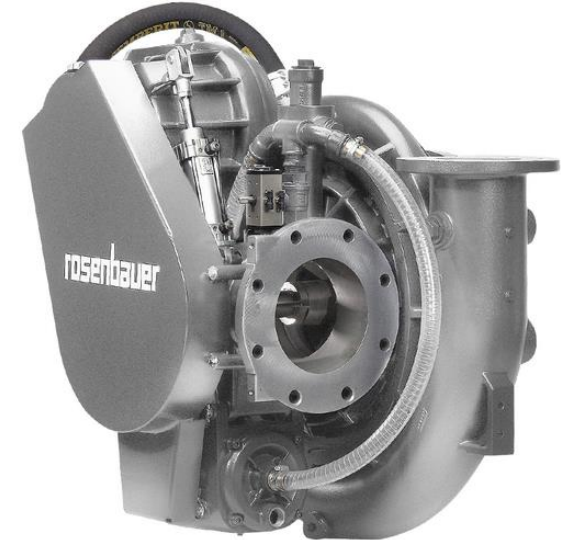
### ➤ Normal pressure pump (N10)

- Single-stage centrifugal pump
- Outputs of up to 1,800 l/min at 10 bar
- Sealing via maintenance-free mechanical sealing
- Design of the normal pressure housing as spiral housing with integrated diffuser for highest possible efficiency



### ➤ Normal pressure pump (N100)

- Single stage normal pressure pump
- Output of up to 10,000 l/min at 10 bar
- High pressure output 400 l/min at 40 bar
- Four-stage high pressure pump (optional)
- Sealing via low maintenance-free mechanical sealing
- Design as centrifugal pump for the smallest pressure shocks
- Design of the normal pressure housing as spiral housing with integrated diffuser for highest possible efficiency



- UL classified in accordance with NFPA1901 150-500, 150-750, 150-1250, 150-1500
- Certified according to EN1028 FPN 10-1500, FPN 10-2000, FPN 10-3000, FPN 10-4000, FPN 10-6000

# Firefighting Systems

## ➤ Ultra-high pressure system (UHPS)



### UHPS extinguishing system

Output 38 l/min at 100 bar



### UHPS XL fire fighting system

Output 51 l/min at 100 bar



- Large throw range: extinguishing from a safe distance (>10 m)
- 70 m active radius (60 m hose, 10 m throw range)
- Easy hose handling: only approx. 7 kg weight with full water fill at 60 m
- Perfect hot spot destruction: Volumes of 38 l/min and 100 bar of pressure result in a particularly high kinetic energy with flame penetration of the solid jet right through to the hot spot
- Best cooling effect: finest firefighting water atomization in spray jet
- Continuous or surge extinguishing, as the stream pattern is continuously adjustable between solid and spray jet
- Integrated foam system and foam attachment
- Easiest system operation - after start-up the system does not require any further attention
- UHPS can be easily added to any vehicle or can be mounted stationary



# Firefighting Systems

## ➤ Foam proportioning systems



Rosenbauer offers both **around-the-pump foam proportioning systems** as well as **direct-injection foam proportioning systems** for Rosenbauer fire pumps. All proportioning systems automatically adjust to the water pressure or water flow.

Models are available for normal pressure as well as high-pressure applications.

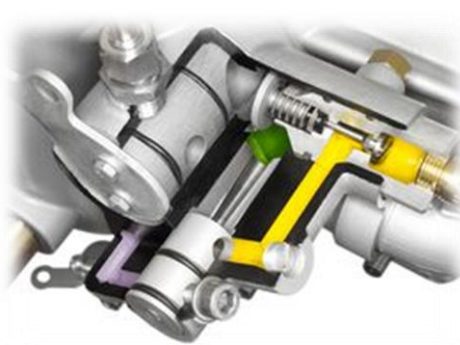
Around-the-pump foam proportioning are integrated directly into the pump / direct-injection proportioning are also optimally integrated to the piping.

### FIXMIX



Around-The-Pump Foam Proportioning System

### HD-FIXMIX



Around-The-Pump Foam Proportioning System

### FOAMATIC A



Around-The-Pump Foam Proportioning System

### FOAMATIC E



Around-The-Pump Foam Proportioning System

### DIGIMATIC



Direct-Injection Foam Proportioning System

### AQUAMATIC



Direct-Injection Foam Proportioning System

### HYDROMATIC



Direct-Injection Foam Proportioning System

### MIXMATIC



Direct-Injection Foam Proportioning System

# Firefighting Systems

## ➤ POLY CAFS fire fighting systems



### ➤ POLY CAFS extinguishing systems

- Lowest Weight
- Highest reliability
- Large throw ranges/heights
- No need for engine, pump etc.
- Easy operation and maintenance
- Highly efficient CAFS foam extinguishing technology

POLY PORTEX  
SL10 CAFS



POLY TROLLEY  
SL35/50 CAFS



POLY BIKE  
SL35/50 CAFS



POLY QUAD  
SL100 CAFS



POLY SKID MODULE  
SL45-100 CAFS



POLY SKID EXTINGUISHING SYSTEMS  
SL100-300 & SL 500-3000 CAFS





# Firefighting Systems

## ➤ Turrets



- Turrets capacities From 800 l/min (200 gal/min) up to 13,000 l/min (3,400 gal/min).
- All Turrets operates with electronic control unit or Manually operated.
- Light metal body with GRF design cover & Integrated light.
- Electric adjusting full/spray jet setting
- Nozzles availability:

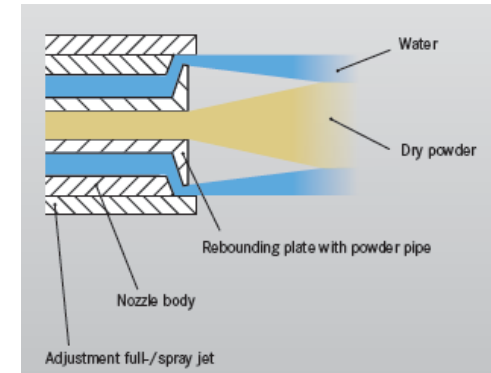
**Foam nozzle**

**Foam nozzle with on top mounted powder nozzle**

**Dry powder nozzle**

**ChemCore nozzle**

**O-stream nozzle**



**RM15**



**RM60**



**RM24**



**RM65**



**RM25**



**RM130**



# Firefighting Systems

## ➤ CAFS System



## ➤ CAFS Applications

**CONTI CAFS** (is suited Direct firefighting, Preventative measures & Avoidance of backfires)

In this system, the air necessary for expansion is generated through a compressor, (hydraulically driven compressor or directly driven compressor)

- **CAFS WR 15** : outlets can be continuously supplied with 1,500 l/min
- **CAFS WR 30** : outlets can be continuously supplied with 3,000 l/min
- **CAFS WR 60** : outlets can be continuously supplied with 4,500 l/min

**FLASH CAFS** (is suited to the largest CAFS foam volumes for ARFF vehicles)

The compressed air is generated via compressed air bottles via SCBA cylinders.

- **FLASH CAFS AR 30 / FLASH CAFS AR 50 / FLASH CAFS AR 100 / FLASH CAFS AR 250**

**SKY CAFS** (is suited to fighting high-rise fires)

The fire fighters face complicated challenges with the ever-increasing heights of the spectacular buildings. In particular, the question of taking water for extinguishing hundreds of meters high up has been keeping fire fighters busy around the world. SKY CAFS by Rosenbauer has a solution to this problem. (UP to 400 meter)

**CAFS MOBILE** (is suited to Upgrading existing vehicles)

The CAFS MOBILE is integrated directly into the fire-extinguishing line and fed with a water-foam mixture. In the CAFS mixing chamber, compressed air is introduced and CAFS foam is made.

**POLY CAFS** (is suited to solid material fires (vehicle, plastic fires etc.) & liquid fires (gasoline, alcohol, paints etc.)

The POLY CAFS family is also characterized by its independence of external energy sources (No pump or compressor) and foam proportioning systems. The extensive product range offers the ideal solution for many applications.





# Firefighting Systems

## ➤ STINGER HRET (High Extended Reachable Turret)



### ➤ STINGER For ARFF vehicles

Max. working height:	16.5 m (54 ft)
Option:	20 m (66 ft)
Max. range:	11.4 m (37.4 ft)
(from middle of turntable)	13.8 m (45 ft) (at 20 m)
Rotation angle:	+/- 30 ° (left/right)
Rotation angle turret	+/- 90 ° (left/right)
Vertical movement turret	+/- 90 ° (Up/down)
Operation:	Joystick (1-hand operation)
Programmed positions:	3 positions + stow position
Flow in stowed position	6,000 l/m (1,585 USgpm)
Flow out of stowed pos.	3,800 l/m (1,000 USgpm)



### ➤ STINGER For industrial vehicles

Max. working height:	16.5 m (54 ft)
Option:	20 m (66 ft)
Max. range:	11.4 m (37.4 ft)
(from middle of turntable)	13.8 m (45 ft) (at 20 m)
Rotation angle:	360 ° endless
Rotation angle turret	+/- 90 ° (left/right)
Vertical movement turret	+/- 90 ° (Up/down)
Operation:	Radio Remote Control
Programmed positions:	Auto-Stow
Flow in stowed position	6,000 l/m (1,585 USgpm)
Flow out of stowed pos.	4,500 l/m (1,200 USgpm)



# Firefighting Systems

## ➤ Motor / Pump Units



## ➤ Engine-pump trailers and units

- **SPA 60** : Engine-pump trailer up to 6,000 l/min
- **SPA 100** : Engine-pump trailer up to 10,000 l/min



- These trailers have also proven themselves in flooding situations.
- In vehicles they are used for uncompromising pump-and-roll operation.
- Engine-pump units ensure water supply, especially in stationary operation.
- The hoses are stored on the trailer, protected from the sun and other environmental influences.
- Engine-pump trailers like the **SPA60** and the **SPA100** are ideally suited for supplying fire fighting water to industrial and refinery plants - especially in harbor areas.

# Firefighting Systems

## ➤ Nozzles & Monitors



Rosenbauer offers different nozzle models.

The NEPIRO combines high-pressure technology and O-stream nozzle.

With the PRO JET model, solid and spray jets are possible simultaneously.

The SELECT FLOW nozzle enables the manual adjustment of the water flow quantity.

**SELECT FLOW**



**PRO JET**



**NEPIRO**



**RB 6 monitor**



**Monitor POWER STREAM**





# Body Components



Rapid intervention hose reel



FLEXILIGHT light mast



Compartment shutters



LCS 2.0 (Logic Control System)



Roll-on/roll-off containers



COMFORT stowage system



## ➤ Information. Analysis. Diagnosis.

- As a full-line supplier in this sector, Rosenbauer develops modern telematics solutions for firefighters. These are information and vehicle management systems that are ready for operation, regardless of location and position. They support firefighters in their daily work - during an operation or afterwards.
- **Service4fire** analyzes components whenever the vehicle is used. The benefits are increased operational readiness and a constant overview of all vehicle processes.
- **The DWD warning system** supports the driver in safe operation of the vehicle.

### service4fire



During operation, service4fire records all processes in the vehicle. Information about vehicle position, operation and condition is evaluated and can be accessed online.

### Service4fire MADAS



Vehicle performance data like acceleration, speed and inclination as well as incidents during the operation are measured and evaluated.

### Driver Warning Device (DWD)



The DWD warning system supports the driver in the safe operation of the vehicle. In the event of critical values, warning signals help the driver to maintain control of their vehicle.

## ➤ Mobile Information Management-EMEREC

Mobile information management for emergency crews:

- **EMEREC** is the information management system from Rosenbauer that supports emergency crews on site. Relevant information like fire safety maps, hazardous material data or vehicle rescue sheets can be accessed directly from the mobile EMEREC Tablet computer and shared with other operational units.
- So all crews involved in the operation have the same level of information.

### EMEREC Pilot



EMEREC Pilot provides operationally-relevant information on-site.

### EMEREC DEVS



EMEREC DEVS enables vehicle navigation under difficult conditions

### EMEREC Tablet



Hardware suitable for operation



## ➤ Competence in firefighting equipment

- Rosenbauer is the provider of a complete assortment of equipment. The product palette ranges from personal protection equipment to technical equipment and special hazmat equipment.
- The popular equipment catalog is available in a browsable format which makes it great to just look around.  
Check it out: (<http://www.rosenbauer.com/en/rosenbauer-world/hauptnavigation/products/equipment/equipment-catalog.html>)

Pumps  
CAFS-System  
Portable Pumps  
Body Components  
POLY CAFS & UHPS



Turrets & Monitors  
Submersible Pumps  
Firefighting Systems  
Proportioning Systems  
Stationary Fire Protection  
Truck-Mounted Fire Pumps



Nozzles  
Protective Boots  
Protective Gloves  
Telescopic Ladder  
Mobile Ventilator

Power Generators  
Protective Helmet  
Protective Clothing  
Hazmat Equipment's  
High Performance Fans  
Thermal Imaging Camera



- Like and follow us on our Social Media



[www.facebook.com/rosenbauergroup](http://www.facebook.com/rosenbauergroup)



[www.twitter.com/rosenbauerGroup](http://www.twitter.com/rosenbauerGroup)

Watch us on



[www.youtube.com/rosenbauerGroup](http://www.youtube.com/rosenbauerGroup)

**Thank you!**

International Sales Dept.

Rosenbauer International AG  
4060 Leonding, Paschinger Str. 90, Austria  
Tel: +43 732 6794-0  
Fax: +43 732 6794-94575  
alaa.ahmed@rosenbauer.com  
[www.rosenbauer.com](http://www.rosenbauer.com)

